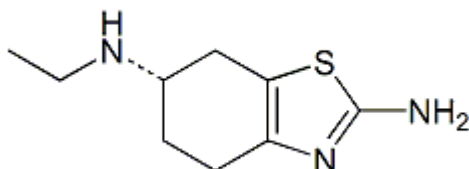


Ethyl Pramipexole



Ethyl Pramipexole

Synonyms	: Pramipexole N6-Ethylamino Analog
CAS Number	: 1254579-15-1 (base)
Chemical Name	: (S)-N6-ethyl-4,5,6,7-tetrahydrobenzo[d]thiazole-2,6-diamine
Molecular Formula	: C ₉ H ₁₅ N ₃ S
Molecular Weight	: 197.30
DATA	: COA, HPLC, MASS, HNMR, CNMR, TGA, IR, SER

<https://www.saitraders.co.in/Impurity/Pramipexole/EthylPramipexole>

Sai Traders

FF-4, Limbani Complex, Nr. Gormoh Hotel, Iscon-Bopal Road, Ambli, Ahmadabad - 380058. India.
Mobile: +91 9227808809, +91 8866555288, <http://saitraders.co.in>